



2 Bedrooms

Holbrook & Co are delighted to offer to the market this charming second floor 2-bedroom apartment situated in a prime location with modern fixtures and fittings. The property is on the second floor and benefits from a secure intercom system to gain entry to the property.

The property boasts resident parking and visitor parking spaces and is close to local amenities, Dalton Park and Local transport links from the A19.

Ideal for professionals, first time buyers or a small family.

Book a viewing now to secure this delightful home!

**Dreswick Court,
Seaham, SR7 9NE**

Asking Price:

£89,950

EPC Rating: To be confirmed



Holbrook & Co are delighted to offer to the market this charming second floor 2-bedroom apartment situated in a prime location with modern fixtures and fittings. The property is on the second floor and benefits from a secure intercom system to gain entry to the property.

The property boasts resident parking and visitor parking spaces and is close to local amenities, Dalton Park and Local transport links from the A19.

Ideal for professionals, first time buyers or a small family.

Book a viewing now to secure this delightful home!

Lounge 5.55 x 4.47. With double glazed bay window and radiator

Kitchen 4.07 x 1.72. With gas hob, electric oven, lino flooring, a range of wall and base units, sink and access to the boiler

Bedroom 1 4.42 x 3.01. With double glazed windows and radiator



For additional information and full photo gallery please visit www.holbrookandco.co.uk



Bedroom 2 3.34 x 2.32. With double glazed windows and radiator

Bathroom 2.33 x 3.02. With lino flooring, bath wait mains shower, wc, and wash hand basin

External Communal doors to both front and back entrances and an allocated parking space.

Material Information Construction

Traditional Construction

Water Meter

Yes

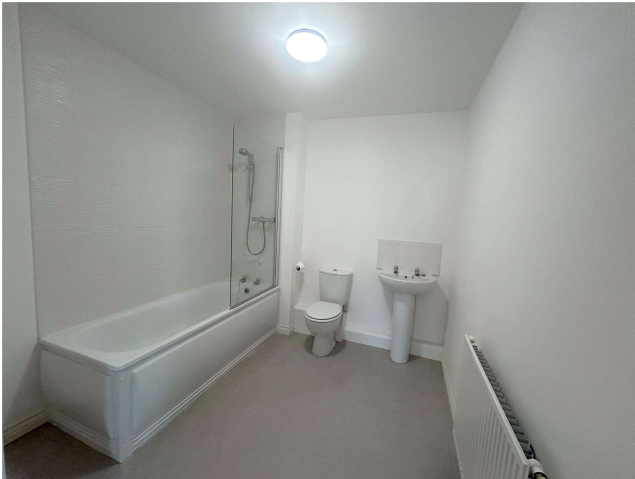
Electric Car Charger

No

Broadband Speed

Can be obtained using this link.

Mobile Phone Signal



Disclaimer Your home is at risk if you do not keep up repayments on your mortgage or other loans secured on it. **MORTGAGE ADVICE** It is now a legal requirement under the Estate Agents Act 1991, to establish what mortgage, if any, is required and to confirm the applicants ability to obtain this finance. If you need any help or advice over obtaining a mortgage, our mortgage department will be pleased to help and advise you on all Building Society or Bank mortgages without obligation. This service is available even if you are not buying via ourselves. Written quotations available on request. There is no charge for this service. Please note that all sizes have been measured with an electronic measuring tape and are approximations only. Under the terms of the property miss-descriptions act we are obliged to point out that none of the services described in these particulars have been tested by ourselves. We present these details of the property in good faith and they were accurate (truncated)



Directions

Council Tax Band - A

Tenure - Freehold

Viewing - By appointment through Holbrook &





For additional information and full photo gallery please visit

www.holbrookandco.co.uk

Every care has been taken with the preparation of these particulars, but they are for general guidance only and complete accuracy cannot be guaranteed. If there is any point, which is of particular importance please ask or professional verification should be sought. All dimensions are approximate. The mention of fixtures, fittings &/or appliances does not imply they are in full efficient working order. Photographs are provided for general information and it cannot be inferred that any item shown is included in the sale. These particulars do not constitute a contract or part of a contract