



3 Bedrooms

Modern Detached Family House in a desirable Town location. This property boasts a spacious garden, patio area, and off-street parking. Ideal for families or professionals looking for a contemporary home with outdoor space.

Nestled in a sought-after neighbourhood of the bustling town, this modern detached house is a true gem. Boasting a contemporary design and ample living space, this property offers the perfect combination of style and comfort. The well-maintained garden and charming patio provide a peaceful retreat, ideal for relaxing or entertaining guests. With the convenience of off-street parking, you will never have to worry about finding a space for your vehicle. The interior features bright and spacious rooms, including a modern kitchen, cosy living area, and well-appointed bedrooms. This property is perfect for families or professionals looking for a stylish and convenient home in a desirable location. Don't miss out on the opportunity to make this house your own and enjoy the best of town living. Contact us today to arrange a viewing!!

Offers Over:

£175,000

EPC Rating: D

Whin Meadows

Hartlepool, England, TS24



Bathroom:

8'6" x 6'4" (2.6m x 1.93m)

Stylish bathroom fitted with wash basin, toilet and bath.

Bedroom:

11'1" x 10'9" (3.38m x 3.28m)

Large open plan bedroom with fitted wardrobes and en suite bathroom.

En Suite:

11'4" x 4'9" (3.45m x 1.45m)

Newly furnished en suite, fitted with stand up shower and wash basin.

Bedroom:

12'7" x 11' (3.84m x 3.35m)

Another large bedroom with a radiator.

Office:

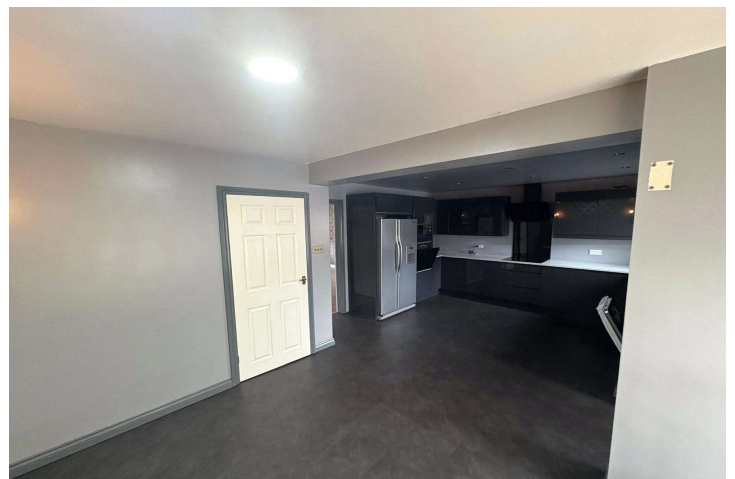
8'11" x 8'3" (2.72m x 2.51m)

Fitted wardrobes

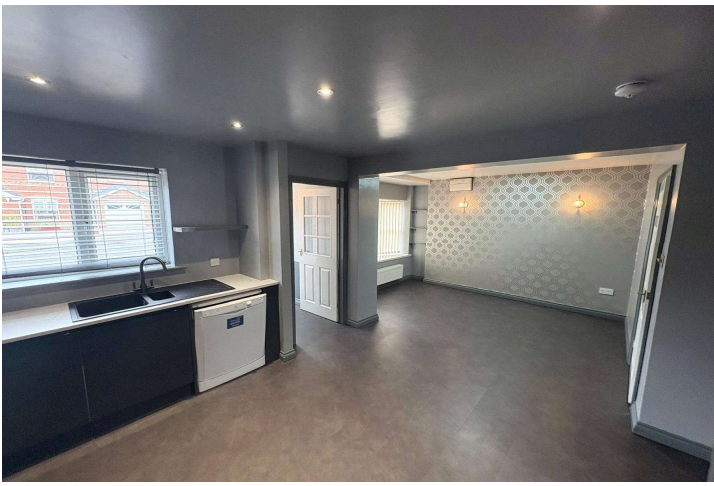
Living Room:

19'9" x 14' (6.02m x 4.27m)

Massive open space with doors leading to garden.



For additional information and full photo gallery please visit www.holbrookandco.co.uk

**Kitchen:****18'8" x 8'10" (5.7m x 2.7m)**

Open space with kitchen and dining/ sitting area.

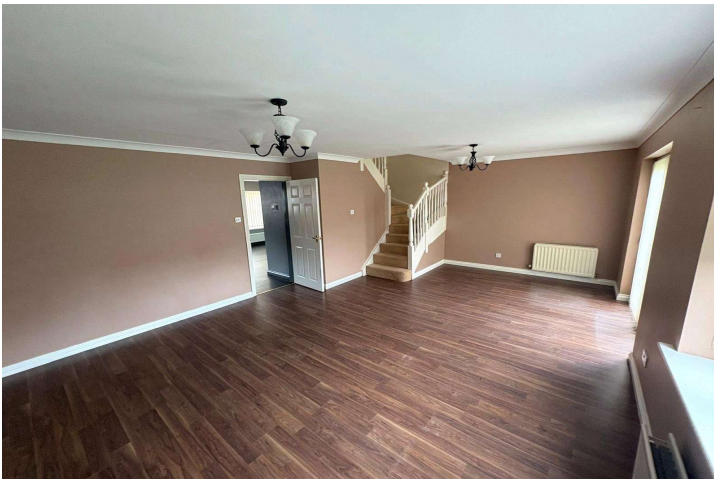
Material information:

Council tax band - C

Freehold

Disclaimer:

Your home is at risk if you do not keep up repayments on your mortgage or other loans secured on it. **MORTGAGE ADVICE** It is now a legal requirement under the Estate Agents Act 1991, to establish what mortgage, if any, is required and to confirm the applicants ability to obtain this finance. If you need any help or advice over obtaining a mortgage, our mortgage department will be pleased to help and advise you on all Building Society or Bank mortgages without obligation. This service is available even if you are not buying via ourselves. Written quotations available on request. There is no charge for this service. **PLEASE NOTE** that all sizes have been measured with an electronic measuring tape and are approximations only. Under the terms of the property mis-descriptions act we are obliged to point out that none of the services described in these particulars have been tested by ourselves. We present these details of the property in good faith and they were accurate at the time at which we inspected the property. These particulars, whilst believed to be accurate are set out as a general outline only for guidance and do not constitute any part of an offer or contract. Intending purchasers should not rely on them as statements of presentation of fact, but must satisfy themselves by inspection or otherwise as to their accuracy. No person in this firms employment has the authority to make or give any representation or warranty in respect of the property. **VIEWING ARRANGEMENTS** To arrange an appointment to view this property, please contact us on 01429 856565, hours are Monday-Friday 9.00am-5.00pm and Saturday 9.00am-12.00pm.

**Tenure** - Freehold**Viewing** - By appointment through Holbrook & Co

For additional information and full photo gallery please visit

www.holbrookandco.co.uk

Every care has been taken with the preparation of these particulars, but they are for general guidance only and complete accuracy cannot be guaranteed. If there is any point, which is of particular importance please ask or professional verification should be sought. All dimensions are approximate. The mention of fixtures, fittings &/or appliances does not imply they are in full efficient working order. Photographs are provided for general information and it cannot be inferred that any item shown is included in the sale. These particulars do not constitute a contract or part of a contract